

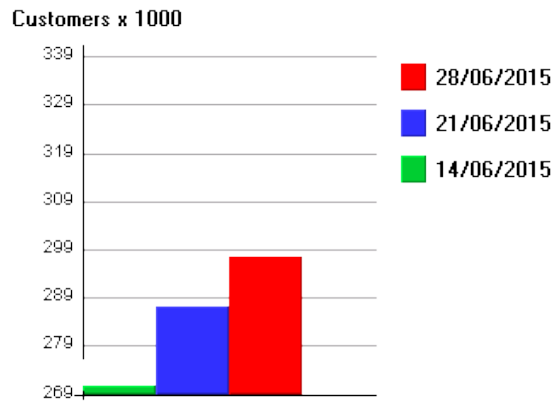
Pedestrian Flows – Big Events Programme 2015

23rd November 2015

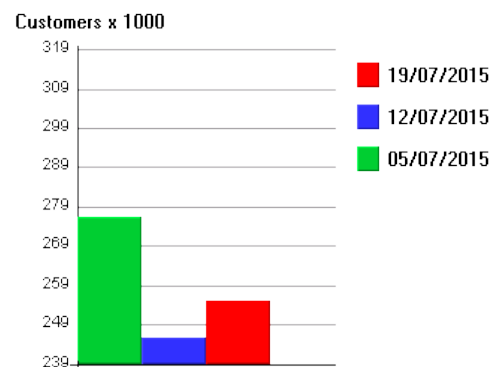
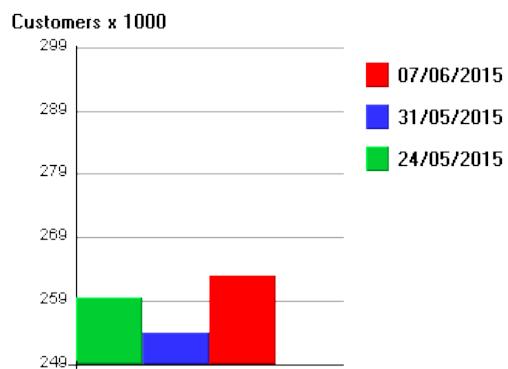
Big Festival 20th June – 5th July

Report area: count points 8, 9, 10 (in and out count, total flows)

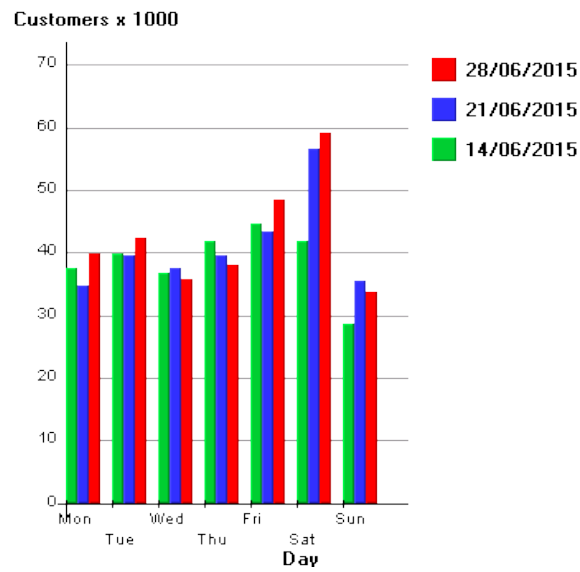
Total pedestrian flows by week:



Comparison weeks:

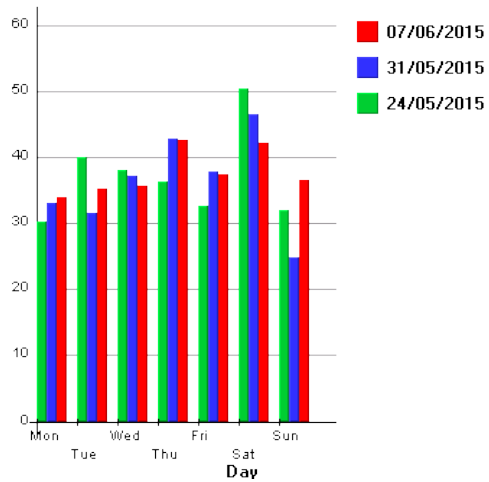


Daily breakdown:

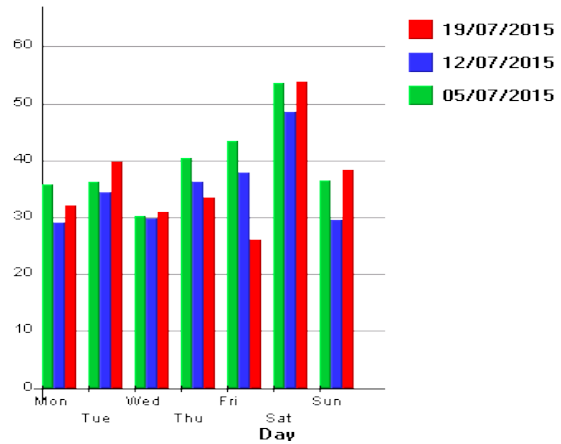


Comparison weeks:

Customers x 1000



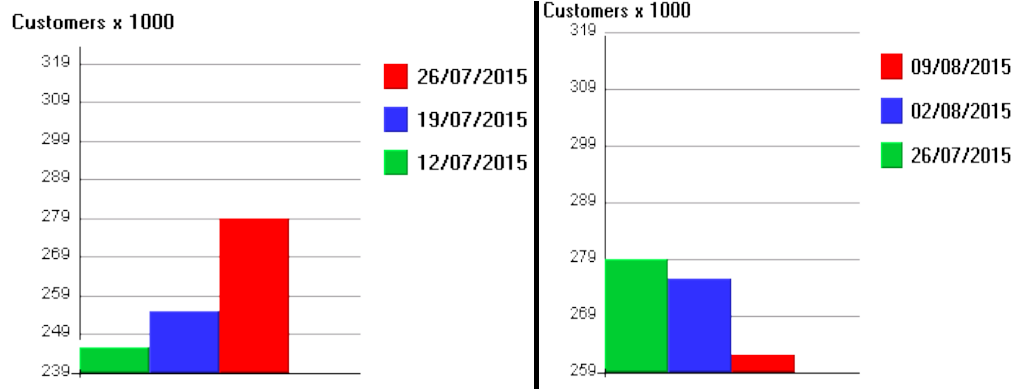
Customers x 1000



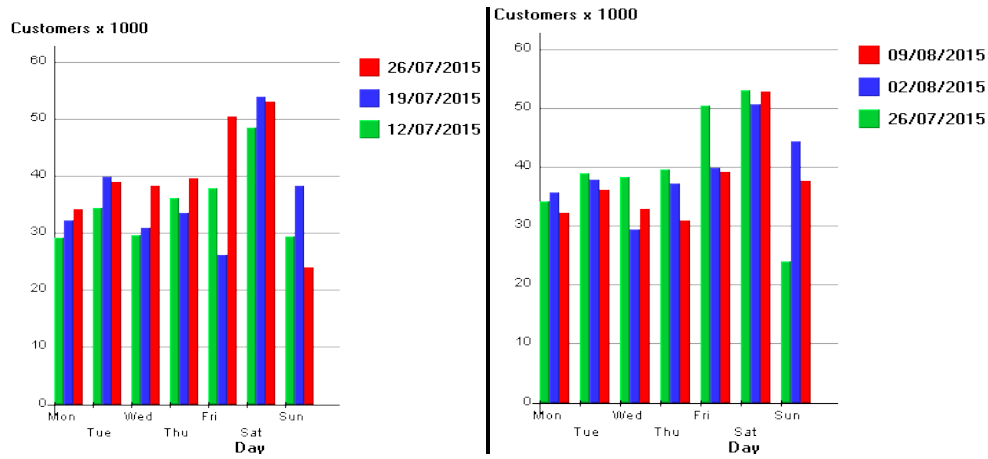
Big Beach 25th July - 2nd August

Report area: count points 8, 9, 10 (in and out count, total flows)

Total pedestrian flows by week, with comparison weeks:



Daily breakdown with comparison weeks:

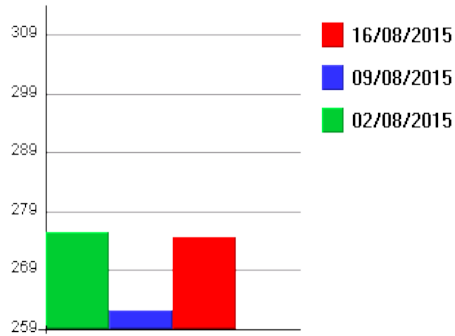


Big Screen 20th – 23rd August

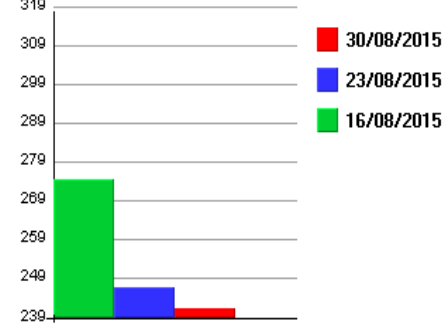
Report area: count points 8, 9, 10 (in and out count, total flows)

Total pedestrian flows by week, with comparison weeks:

Customers x 1000

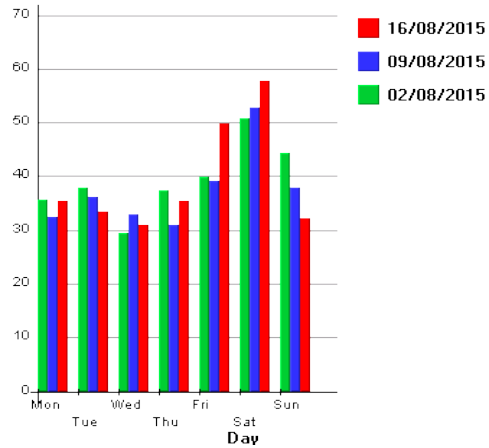


Customers x 1000

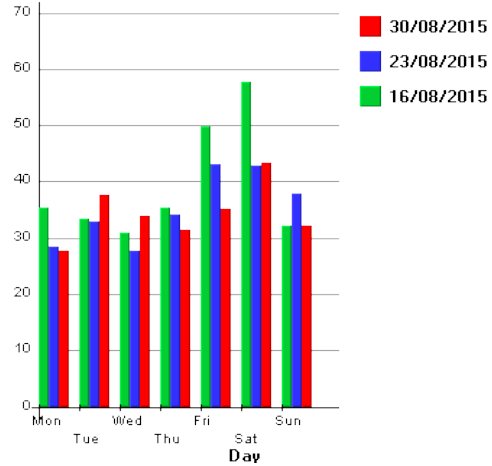


Daily breakdown with comparison weeks:

Customers x 1000



Customers x 1000

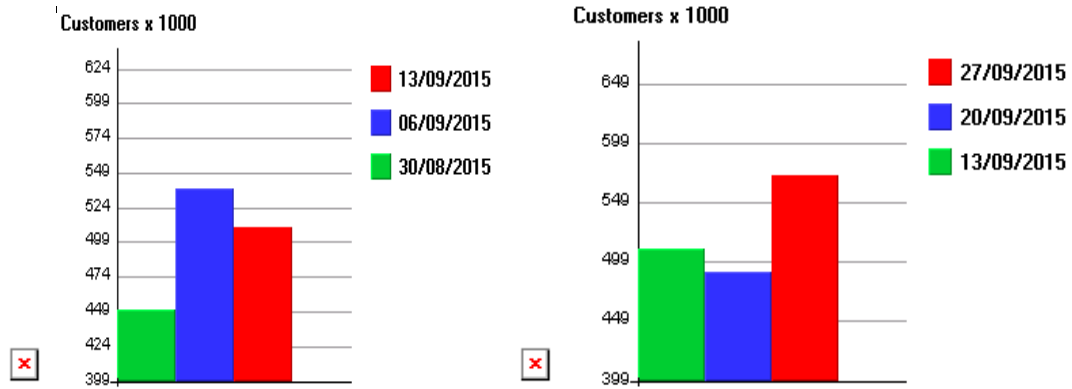


Big Sports Day 19th September

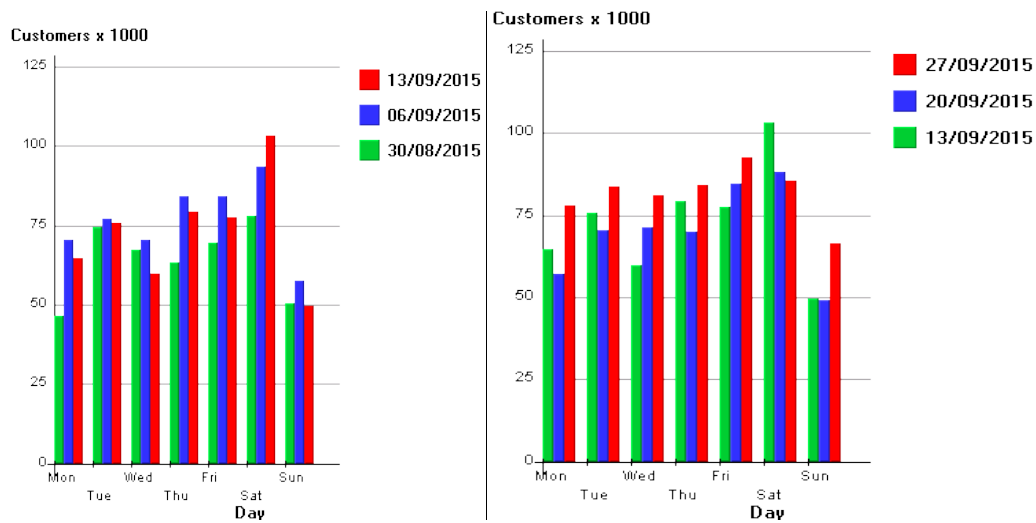
Report area: count points 4, 5, 6, 8, 9, 10 (in and out count, total flows)

NOTE – THIS IS A WIDER REPORT AREA

Total pedestrian flows by week, with comparison weeks:



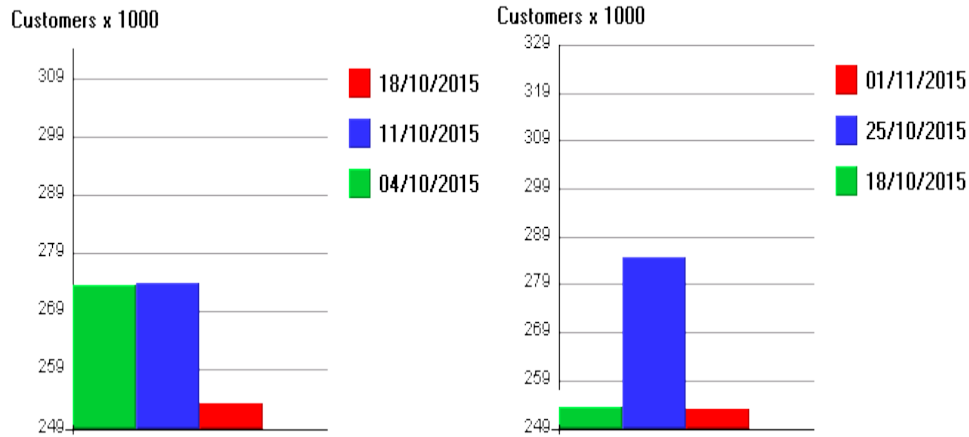
Daily breakdown with comparison weeks:



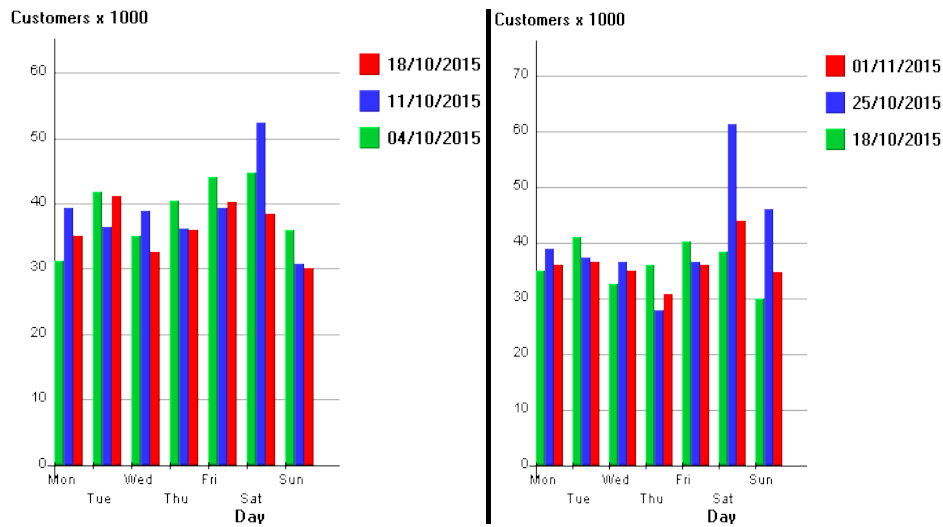
Diwali on the Parade 25th October

Report area: count points 8, 9, 10 (in and out count, total flows)

Total pedestrian flows by week, with comparison weeks:



Daily breakdown with comparison weeks:



Customers x 1000

